

TWL Series Extra Wide Trail Light

TRAIL AND WALKWAY LIGHTING

300-480V

100-277V

**LM79
LM80**

IP65



PROJECT INFORMATION

Project Name _____

Catalog No. _____ Date _____

DESCRIPTION

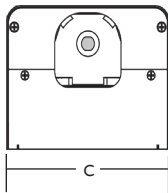
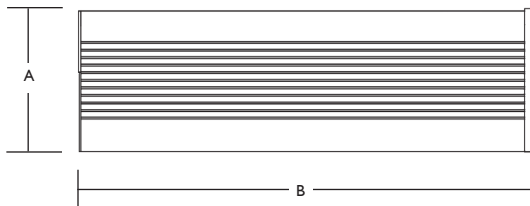
The ActiveLED® TWL Series Extra Wide Trail Light is part of a series of trail, walkway and pathway lighting fixtures. The TWL series is built to deliver the highest performance and quality while consuming 50-85% less energy than conventional lighting. With uniform light output focusing light on the trail, walkway or pathway the fixture offers Dark Sky compliance and less glare.

Applications include: Trails, Walkway and Pathway Lighting



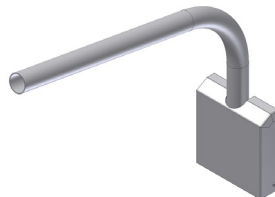
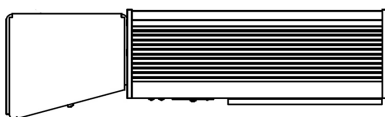
TWL Series Extra Wide Trail Light with optional Motion Sensor.

DIMENSIONS



A	B	C
4.76"	24"	6.13"
12.09cm	60.96cm	15.59cm

MOUNTING OPTIONS



Contact the factory for other Mounting Options

FEATURES

- ActiveREST™ Dimming Technology - Fixture may be automatically dimmed when full light levels are not required. EXAMPLE - Dimming level 40 equates to less than 9% of actual watts being consumed.
- ThermalDRAW™ Cooling Technology - Patented cooling technology ensures LED components will equal or exceed warranty.
- LightSpace® Lighting Controls - Fixture is capable of being programmed and controlled either individually or as part of a lighting zone via remote sensors, switches or building management system (BMS).
- Battery Backup Enabled - This option provides 48V DC support for an Emergency Battery Backup Unit (BBU sold separately) creating an Emergency LED Light Fixture.
- Dusk/Dawn Sensor - Optional photocell allows fixture to automatically turn on or off based on daylight detection.
- IR Receiver Plus Motion - Optional remote passive infrared (PIR) motion sensor with IR receiver for programmable Vacant-to-OFF and Vacant-to-Dim level programming.
- IR Receiver - Optional integral IR sensor only for ON-to-Dim programming.
- Warranty - 10 Year Warranty on LED elements, fixture housing, and LED Driver. See page 2 for additional warranty information.

LIGHT OUTPUT

3,411 lm

WATTS

37.44 W

LUMENS per WATT

91.7 lm/W

LIGHT COLOR (CCT)

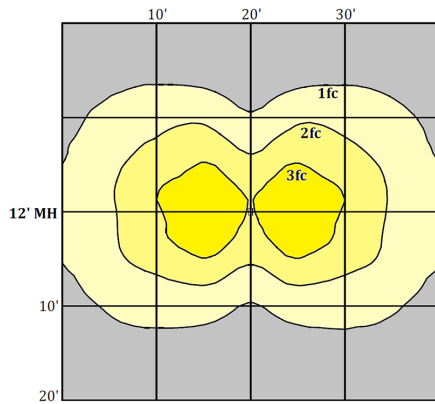
5,684 K

NOTE: Lighting Facts shown for TWL, 36W only.
For more Lighting Facts, visit lightingfacts.com for the Label and Label Reference Guide.

ActiveLED®
Energy Efficient Lighting and Controls



PHOTOMETRICS



PERFORMANCE DATA

AMBIENT TEMPERATURES	0 HOURS	45,000 HOURS	90,000 HOURS
77°F (25°C)	1.00	0.99	0.99
104°F (40°C)	1.00	0.98	0.96
131°F (55°C)	1.00	0.96	0.92
140°F (60°C)	1.00	0.95	0.90

Projected Lumen Maintenance (TM-21)

NOTE: Calculated using data collected according to LM-80 lumen maintenance on the LED package.

NOTE: Photometrics shown for TWL 36W only. Contact company for photometrics on other sizes.

GENERAL SPECIFICATIONS

Input Voltage	Auto-sensing, 100-277 Volts AC, 50/60 Hz; Auto-sensing, 300-480 Volts AC, 50/60 Hz	LED Optics	IP65 rated, thermally bonded LEDs, borosilicate glass lens w/silicone sealing. Patented thermal management mounting system
Input Power	38 Input Watts 36 LED Watts	CCT	2700K, 3000K, 3500K, 4000K, or 5000K
Power Factor	> 0.95 (at ~100-277 Volts)	Housing	Extruded aluminum for enclosure and heat sinking parts, stainless steel hardware
THD	Total Harmonic Distortion (THD) <20% (typical 9.9%)	Finish	Powder coated after fabrication
Driver	Integral driver with integrated intelligent controls and integral heat sink	Dimensions	4" Height, 6" Wide and 17" Length (10.2cm x 15.2cm x 43.2cm)
Operating Temperature	-58° F to 149° F (-50° C to 65° C)	Weight	27 pounds (12.24kg)
Lumen Lifetime	L90/90K Hrs @ 60° C (90,000 Hrs with 90% Luminous Flux)		

WARRANTY

Ten (10) Year Warranty - LEDs, Fixture, and Driver shall conform to its published specifications under normal usage and operating conditions including "no light loss" of more than 10% at the end of the period. LEDs will produce at least 90% of their initial light output with no color shift after 90,000 hours of operation.

LISTINGS AND TESTS

cUL listed driver, UL 1598, CE, suitable for exterior locations. RoHS compliant. IP65 Rated optical assembly. LM-79 and LM-80 info available. Conforms to FCC Part 15.19 Subpart B Class A. Made in USA - ARRA Compliant.

ORDERING INFORMATION

Example: TWLUD-RM-AF5024SL

TWL				X			36		
-----	--	--	--	---	--	--	----	--	--

Style	Voltage	Dusk to Dawn Selection	Mount	Optics	Diffuser	CCT	Watts	Color	Options
TWL	U 100-277 VAC, 50/60 Hz.	D Standard "Button" Style Dusk	RM Round Arm Mount	X Xtra-Wide Pattern	C High Impact Composite	50 5,000K	36 36W LED, 38W Max	SL Silver	B Battery Backup Enabled
	6 300-480 VAC, 50/60 Hz., Digitally & BBU Enabled	P Optional "Twist-Lock" Dusk	SP Square Pole Mount	D Mottled Glass	E Etched Clear Low Fe Glass	40 4,000K		BK Black	J B plus M
	S Solar Integrated, DC Only Driver		2P Square Pole Extender	E Etched Clear Low Fe Glass	F Clear Low Fe Glass	35 3,500K		BR Brown	M Motion + IR Receiver, Programmable
	N None ¹		4K Knuckle Tennon Mount	F Clear Low Fe Glass	G Bullet Proof Glass	30 3,000K		BZ Bronze	N Motion/IR with Customized Timer / Dimming Parameters
	E 45/48 VDC Driver ²		5K Knuckle J-Box Mount			27 2,700K		CG Charcoal	R IR Receiver Only, Programmable ³
								WH White	
								X Custom	

¹ Requires remote driver. Consult factory.

² No AC Support.

³ 48W and 72W Only.