

SBF Series Shoebox Flood

AREA FLOOD LIGHTING

100-277V

**LM79
LM80**

IP65



PROJECT INFORMATION

Project Name _____

Catalog No. _____ Date _____

DESCRIPTION

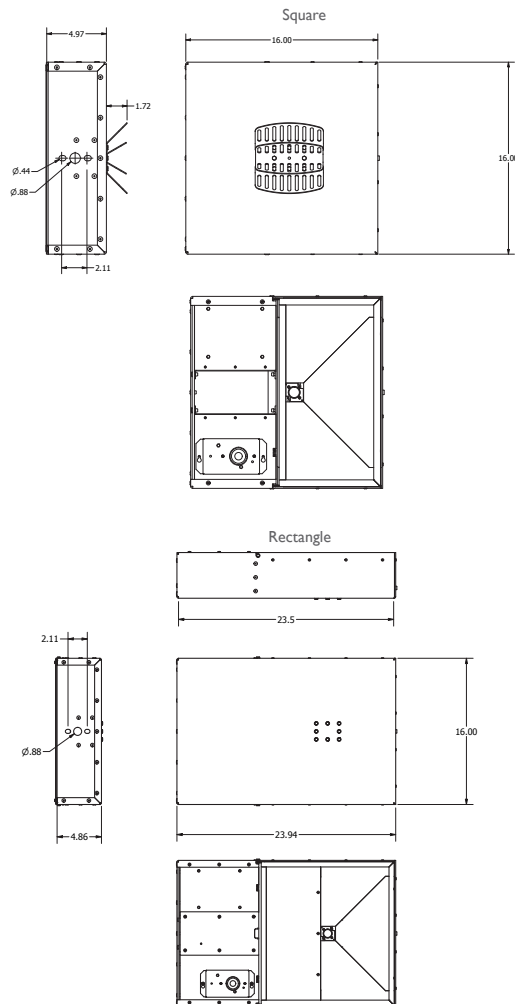
The ActiveLED® SBF Series Shoebox Flood is engineered as an energy efficient replacement for high wattage Metal Halide and High Pressure Sodium light fixtures. The design boasts our LUM-INTENSE™ LED Lighting Technology and a total fixture light output of 12,240 Lumens.

Applications include: Parking areas, Building and Property Perimeters, Overpasses.



ActiveLED SBF Shoe Box Flood shown with optional Dark Sky Shield

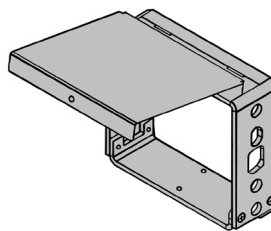
DIMENSIONS



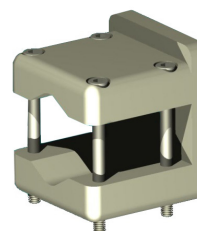
FEATURES

- Optional: adjustable, Dark Sky Shield.
- Dusk to Dawn Sensor
- Motion Sensor
- ThermalDRAW™ Cooling Technology - Patented cooling technology ensures LED components will equal or exceed warranty.
- LUM-INTENSE™ - LED lighting luminaire technology that combines recent advancements in LED Modules, Drivers and Optics to deliver more Lumens per Watt in a smaller package.
- Soft start reduces in-rush power demand.
- Warranty - 10 Year Warranty on LED elements, fixture housing, and LED Driver.

MOUNTING OPTIONS



Square Pole Mount
Part # 00-27-0002-0015



Round Arm Mount
Part # 00-27-0002-0003B



LIGHT OUTPUT
12,240 lm

WATTS
80W

LUMENS per WATT
153 lm/W

LIGHT COLOR (CCT)
3000 K

ActiveLED®
Energy Efficient Lighting and Controls

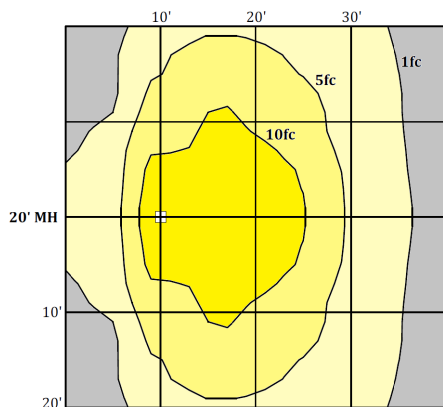
NOTE: Lighting Facts shown for SBF, 80W only.
For more Lighting Facts, visit lightingfacts.com for the Label and Label Reference Guide.



SBF Series Shoebox Flood

AREA FLOOD LIGHTING

PHOTOMETRICS



PERFORMANCE DATA

AMBIENT TEMPERATURES	0 HOURS	45,000 HOURS	90,000 HOURS
77°F (25°C)	1.00	0.99	0.99
104°F (40°C)	1.00	0.98	0.96
131°F (55°C)	1.00	0.96	0.92
140°F (60°C)	1.00	0.95	0.90

Projected Lumen Maintenance (TM-21)

NOTE: Calculated using data collected according to LM-80 lumen maintenance on the LED package.

GENERAL SPECIFICATIONS

Input Voltage	Auto-sensing, 100-277 Volts AC, 50/60 Hz	LED Optics	IP65 rated, thermally bonded LEDs, borosilicate glass lens w/silicone sealing. Patented thermal management mounting system
Input Power	80 Watt 100 Watt (select with order)	CCT	2700K, 3000K, 3500K, 4000K, or 5000K
Power Factor	> 0.90 (at ~100-277 Volts)	Housing	Aluminum for enclosure and heat sinking parts, stainless steel hardware
THD	Total Harmonic Distortion (THD) <20% (typical 9.9%)	Finish	Powder coated after fabrication
Driver	Integrated driver with integral heat sink	Dimensions	Square: 16 x 16 x 4.97, Rectangle: 16 x 23.94 x 4.86
Operating Temperature	-58° F to 149° F (-50° C to 65° C)	Weight	25 lbs (square) 27.5 lbs (rectangle)
Lumen Lifetime	L90/90K Hrs @ 60° C (90,000 Hrs with 90% Luminous Flux)		

WARRANTY

Ten (10) Year Warranty - LEDs, Fixture, and Driver shall conform to its published specifications under normal usage and operating conditions including "no light loss" of more than 10% at the end of the period. LEDs will produce at least 90% of their initial light output with no color shift after 90,000 hours of operation.

LISTINGS AND TESTS

UL listed driver; CE, suitable for exterior locations. RoHS compliant. IP65 Rated optical assembly. LM-79 and LM-80 info available. Conforms to FCC Part 15.19 Subpart B Class A. Made in USA - ARRA Compliant.

ORDERING INFORMATION

Example: SBFSU-SP-F53080BZ-J

SBF				F					
------------	--	--	--	----------	--	--	--	--	--

Style	Dimension	Voltage	Mount	Diffuser	Pattern	CCT	Watts	Color	Options
SBF	S	U	SP	F	3	50	80	SL	D
SBF Series Shoebox Flood	Square 16x16	100-277 VAC, 50/60 Hz.	Square Pole Mount	Clear Low Fe Glass (Over the LED only)	Type 3 Wide	5,000K	80W 12,240 lm	Silver	Dusk to Dawn
	R	H	4K	P	5	40	100	BK	M
	Rectangle 16x23	300-480 VAC, 50/60 Hz.	Knuckle Tenon End	Polycarbonate	Type 5 Symmetrical	4,000K	100W 15,000 lm	Black	Motion
		N	RM			35		BR	J
		No Power Supply	Round Arm Mount			3,500K		Brown	Both Dusk to Dawn and Motion
						30		BZ	
						3,000K		Bronze	
						27		CG	
						2,700K		Charcoal	
								WH	
								White	
								X	
								Custom	