

# TWL Series Traditional Trail Light

TRAIL AND WALKWAY LIGHTING

**300-480V**

**100-277V**

**LM79  
LM80**

**IP65**



## PROJECT INFORMATION

Project Name \_\_\_\_\_

Catalog No. \_\_\_\_\_

Date \_\_\_\_\_

## DESCRIPTION

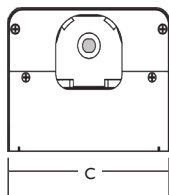
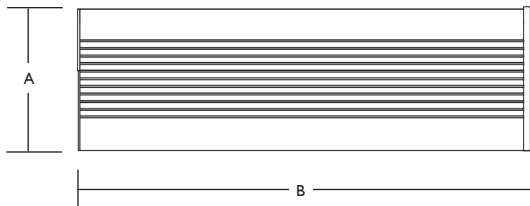
The ActiveLED® TWL Series Traditional Trail Light is part of a series of trail, walkway and pathway lighting fixtures. The TWL series is built to deliver the highest performance and quality while consuming 50-85% less energy than conventional lighting. With uniform light output focusing light on the trail, walkway or pathway the fixture offers Dark Sky compliance and less glare.

Applications include: Trails, Walkway and Pathway Lighting



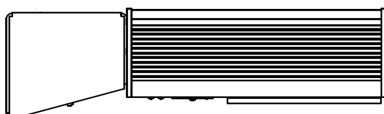
TWL Series Trail Light

## DIMENSIONS

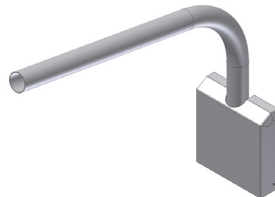


A	B	C
4.76"	24"	6.13"
12.09cm	60.96cm	15.59cm

## MOUNTING OPTIONS



Contact the factory for other Mounting Options



## FEATURES

- ActiveREST™ Dimming Technology - Fixture may be automatically dimmed when full light levels are not required. EXAMPLE - Dimming level 40 equates to less than 9% of actual watts being consumed.
- ThermalDRAW™ Cooling Technology - Patented cooling technology ensures LED components will equal or exceed warranty.
- LightSpace® Lighting Controls - Fixture is capable of being programmed and controlled either individually or as part of a lighting zone via remote sensors, switches or building management system (BMS).
- Battery Backup Enabled - This option provides 48V DC support for an Emergency Battery Backup Unit (BBU sold separately) creating an Emergency LED Light Fixture.
- Dusk/Dawn Sensor - Optional photocell allows fixture to automatically turn on or off based on daylight detection.
- IR Receiver Plus Motion - Optional remote passive infrared (PIR) motion sensor with IR receiver for programmable Vacant-to-OFF and Vacant-to-Dim level programming.
- IR Receiver - Optional integral IR sensor only for ON-to-Dim programming.
- Warranty - 10 Year Warranty on LED elements, fixture housing, and LED Driver. See page 2 for additional warranty information.

LIGHT OUTPUT

**5,145** lm

WATTS

**24.76** W

LUMENS per WATT

**71.31** lm/W

LIGHT COLOR (CCT)

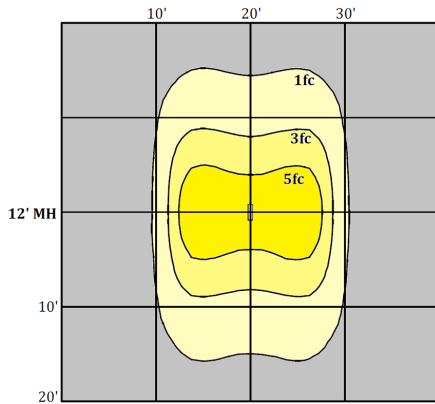
**5,104** K

**ActiveLED®**  
Energy Efficient Lighting and Controls

NOTE: Lighting Facts shown for FL40, 96W only.  
For more Lighting Facts, visit [lightingfacts.com](http://lightingfacts.com) for the Label and Label Reference Guide.



## PHOTOMETRICS



## PERFORMANCE DATA

AMBIENT TEMPERATURES	0 HOURS	45,000 HOURS	90,000 HOURS
77°F (25°C)	1.00	0.99	0.99
104°F (40°C)	1.00	0.98	0.96
131°F (55°C)	1.00	0.96	0.92
140°F (60°C)	1.00	0.95	0.90

Projected Lumen Maintenance (TM-21)

NOTE: Calculated using data collected according to LM-80 lumen maintenance on the LED package.

NOTE: Photometrics shown for FL40, 96W only. Contact company for photometrics on other sizes.

## GENERAL SPECIFICATIONS

Input Voltage	Auto-sensing, 100-277 Volts AC, 50/60 Hz; Auto-sensing, 300-480 Volts AC, 50/60 Hz	LED Optics	IP65 rated, thermally bonded LEDs, borosilicate glass lens w/silicone sealing. Patented thermal management mounting system
Input Power	26 Input Watts 24 LED Watts	CCT	2700K, 3000K, 3500K, 4000K, or 5000K
Power Factor	> 0.95 (at ~100-277 Volts)	Housing	Extruded aluminum for enclosure and heat sinking parts, stainless steel hardware
THD	Total Harmonic Distortion (THD) <20% (typical 9.9%)	Finish	Powder coated after fabrication
Driver	Integral driver with integrated intelligent controls and integral heat sink	Dimensions	4" Height, 6" Wide and 17" Length (10.2cm x 15.2cm x 43.2cm)
Operating Temperature	-58° F to 149° F (-50° C to 65° C)	Weight	27 pounds (12.24kg)
Lumen Lifetime	L90/90K Hrs @ 60° C (90,000 Hrs with 90% Luminous Flux)		

## WARRANTY

Ten (10) Year Warranty - LEDs, Fixture, and Driver shall conform to its published specifications under normal usage and operating conditions including "no light loss" of more than 10% at the end of the period. LEDs will produce at least 90% of their initial light output with no color shift after 90,000 hours of operation.

## LISTINGS AND TESTS

cUL listed driver, UL 1598, CE, suitable for exterior locations. RoHS compliant. IP65 Rated optical assembly. LM-79 and LM-80 info available. Conforms to FCC Part 15.19 Subpart B Class A. Made in USA - ARRA Compliant.

## ORDERING INFORMATION

Example: TWLUD-RM-AF5024SL

TWL							24		
-----	--	--	--	--	--	--	----	--	--

Style	Voltage	Dusk to Dawn Selection	Mount	Optics	Diffuser	CCT	Watts	Color	Options
<b>TWL</b>	<b>U</b> 100-277 VAC, 50/60 Hz.	<b>D</b> Standard "Button" Style Dusk	<b>RM</b> Round Arm Mount	<b>A</b> Trail / Walkway Pattern	<b>C</b> High Impact Composite	<b>50</b> 5,000K	<b>24</b> 24W LED, 26W Max	<b>SL</b> Silver	<b>B</b> Battery Backup Enabled
	<b>6</b> 300-480 VAC, 50/60 Hz., Digitally & BBU Enabled	<b>P</b> Optional "Twist-Lock" Dusk	<b>SP</b> Square Pole Mount	<b>F</b> All Forward Pattern	<b>D</b> Mottled Glass	<b>40</b> 4,000K		<b>BK</b> Black	<b>J</b> B plus M
	<b>S</b> Solar Integrated, DC Only Driver		<b>2P</b> Square Pole Extender	<b>L</b> All Left Pattern	<b>E</b> Etched Clear Low Fe Glass	<b>35</b> 3,500K		<b>BR</b> Brown	<b>M</b> Motion + IR Receiver, Programmable
	<b>N</b> None <sup>1</sup>		<b>4K</b> Knuckle Tennon Mount	<b>R</b> All Right Pattern	<b>F</b> Clear Low Fe Glass	<b>30</b> 3,000K		<b>BZ</b> Bronze	<b>N</b> Motion/IR with Customized Timer / Dimming Parameters
	<b>E</b> 45/48 VDC Driver <sup>2</sup>		<b>5K</b> Knuckle J-Box Mount	<b>W</b> Wide Pattern	<b>G</b> Bullet Proof Glass	<b>27</b> 2,700K		<b>CG</b> Charcoal	<b>R</b> IR Receiver Only, Programmable <sup>3</sup>
								<b>WH</b> White	
								<b>X</b> Custom	

<sup>1</sup> Requires remote driver. Consult factory.

<sup>2</sup> No AC Support.

<sup>3</sup> 48W and 72W Only.